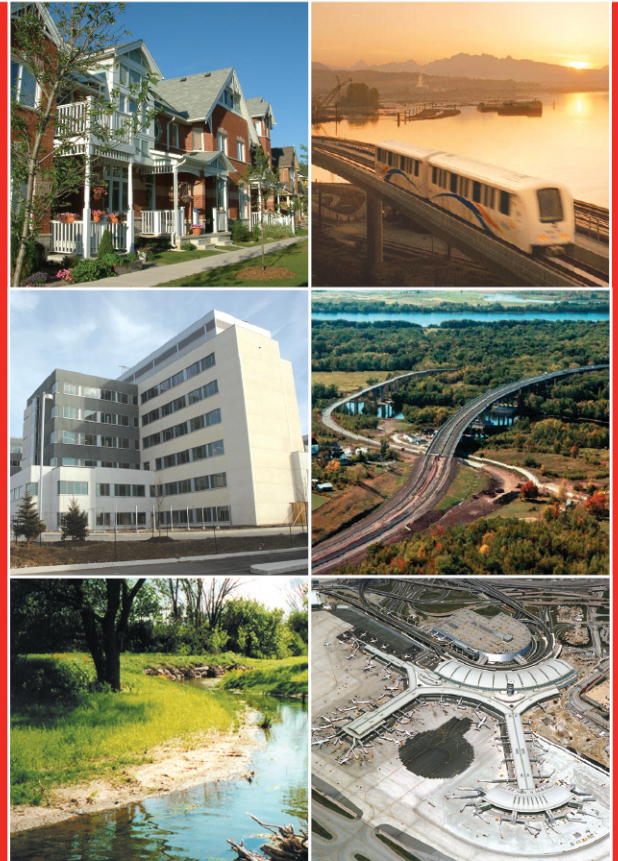


MMM Group Limited



DESIGN AND CONSTRUCTION REPORT

**Detailed Design Study to Advance Construction for the
Highway 7 New and Highway 85 Interchange
E-N Ramp widening of the Highway 85 and
Guelph Street Overpass**

Prepared for the Ministry of Transportation
West Region

January 2015

COMMUNITIES

TRANSPORTATION

BUILDINGS

INFRASTRUCTURE



DESIGN AND CONSTRUCTION REPORT

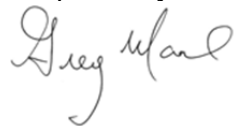
Detailed Design Study to Advance Construction for the Highway 7 New and
Highway 85 Interchange
E-N Ramp widening of the Highway 85 and
Guelph Street Overpass

Prepared for the Ministry of Transportation

By MMM Group Limited

January 2015

Prepared by:



Mr. Greg Moore
Senior Environmental Planner
Environmental Planning
MMM Group Limited

Reviewed by:



Ms. Alla Dinerman, P.Eng.
Senior Project Manager
Transportation
MMM Group Limited

THE PUBLIC RECORD

Ce document hautement spécialisé n'est disponible qu'en anglais en vertu du règlement 671/92, qui en exempte l'application de la Loi sur les services en français. Pour de l'aide en français veuillez communiquer avec Heather Edwardson, ministère des Transports au: (905) 704-2210.

This document is available for public review and comments for a period of thirty (30) days between January 23, 2015 and February 22, 2015 at the following locations.

Review Locations

Ministry of the Environment

Environmental Assessment & Approvals Branch
2 St. Clair Avenue West, Floor 12 A
Toronto, Ontario

Ministry of the Environment

West Central Regional Office
119 King St. West
12th Floor
Hamilton, Ontario

Ministry of the Environment

Guelph District Office
1 Stone Road West
Guelph, Ontario

Ministry of Transportation

West Region
Front Lobby
659 Exeter Road
London, Ontario

Regional Municipality of Waterloo

Clerk's Department
150 Frederick Street
Kitchener, Ontario

City of Kitchener

Clerk's Department
200 King Street West
Kitchener, Ontario

Kitchener Public Library

85 Queen Street North
Kitchener, Ontario

A digital copy of this report has been made available to the review locations above, as well as the following: County of Wellington, Township of Guelph/Eramosa, Township of Woolwich and the City of Guelph.

Project Managers – Contact Information

Further information related to this project can be obtained by contacting the consultant Project Manager and the MTO Project Manager at the following locations:

Ms. Alla Dinerman, P.Eng.
Senior Project Manager
Transportation
MMM Group Limited
100 Commerce Valley Drive West
Thornhill, ON L3T 0A1
T: (905) 882-7212
F: (905) 882-0055
E: dinermana@mmm.ca

Mr. Robert Bakalarczyk, P.Eng.
Senior Engineer, Highway Engineering
Ministry of Transportation
West Region
Planning and Design Section
659 Exeter Road, 3rd Floor
London, ON N6E 1L33
T: (519) 873-4602
F: (519) 873-4600
E: Robert.Bakalarczyk@ontario.ca

TABLE OF CONTENTS

THE PUBLIC RECORD	ii
1 OVERVIEW.....	1
1.1 Summary of Description of the Undertaking.....	1
1.2 The Environmental Assessment Process.....	3
1.3 Federal Approvals	4
1.4 Purpose of Report	4
2 Consultation / Engagement Process.....	5
2.1 External Agencies and Municipalities	5
2.2 Public.....	6
2.3 First Nations and Métis Communities	7
3 Detailed Description of the Recommended Design	8
3.1.1 Major Features of the Proposed Work – Guelph Street	8
3.1.2 Utilities	8
3.1.3 Illumination	9
3.1.4 Construction Staging	9
4 Potential Environmental Effects, Mitigation Measures and Commitments to Future Work..	10
4.1 Erosion and Sediment Control.....	10
4.2 Fisheries and Aquatic Habitat.....	12
4.3 Vegetation, Wildlife and Wildlife Habitat.....	12
4.4 Groundwater.....	13
4.5 Site Contamination / Management of Excess Materials	13
4.6 Heritage	13
4.7 Archaeology.....	14
4.8 Noise	14
4.9 Property Requirements.....	14
4.10 Construction Staging / Access.....	15
4.11 Emergency Services.....	15
4.12 Summary of Environmental Effects and Proposed Mitigation.....	15
5 Monitoring	21

LIST OF EXHIBITS

Exhibit 1-1: Project Location2
Exhibit 4-1: Guelph Street Widening - Natural Environment.....11

APPENDICES

APPENDIX A: Notification Materials

APPENDIX B: Construction Plans

1 OVERVIEW

1.1 Summary of Description of the Undertaking

The Ministry of Transportation, Ontario (MTO) has retained MMM Group Limited (MMM) to complete the detailed design for the widening of the Highway 85 and Guelph Street overpass bridge structure for the future construction of the East-to-North (E-N) ramp of the Highway 7 New and Highway 85 interchange.

The Environmental Assessment process for the Highway 7 New project (GWP 408-88-00) was conducted as an Individual Environmental Assessment (EA). The widening of the Guelph Street Bridge crossing Highway 7/85 is required to accommodate the future construction of the E-N ramp of the Highway 7 New and Highway 85 interchange. The bridge widening will generally include the following:

- ▶ Extension of the existing overpass bridge structure to permit the construction of the E-N ramp;
- ▶ Reconstruction and lowering of Guelph Street to provide for the necessary vertical clearances under the bridge extension; and
- ▶ Reconstruction of the local watermain and storm sewer to accommodate the lowering of Guelph Street.

Guelph Street is expected to be closed at Highway 85, between Riverbend Drive and Sereda Road/Spring Valley Road for the duration of the work (approximately 18 weeks). Detour signage will be in place to advise of the closure and to identify an alternative route. Alternate routes will be available to the south via Wellington Street and to the north via Lancaster Street.

A map identifying the project location is shown in **Exhibit 1-1**.

The planning and preliminary design study for the Highway 7 New project was conducted as an Individual EA, which was approved by the Minister of the Environment (Minister) in March 2007. The study is documented in the 2004 Highway 7 Kitchener to Guelph Amendment to the Environmental Assessment Report, 1997. A Value Engineering (VE) Study was subsequently carried out by the Ministry of Transportation (MTO) in 2007 to identify opportunities to improve the design, provide updates and improve the overall value of the project. The proposed VE changes were documented in a Transportation Environmental Study Report (TESR) to Amend the Individual EA (May 2012) and received Environmental Clearance in October 2012. An Initial Design Report (IDR) was prepared to document further developments and refinements of the approved EA design and incorporation of the VE design improvements (April 2014).

Exhibit 1-1: Project Location



The widening of the Guelph Street Bridge crossing Highway 85 is part of the Ministry's commitment to advance construction for the approved Highway 7 New (GWP 408-88-00). Other advanced components include the Shirley Avenue extension and the replacement of the Victoria Street Bridge over Highway 85. These components will be documented in a separate Design and Construction Report (DCR) and filed separately for a 30-day public review period. A notice will be published advising the public of the review period.

Originally, the Guelph Street Bridge widening was identified in the Notice of Study Commencement for Highway 7 New on August 30, 2014 in the Waterloo Region Record, and on September 3, 2014 in the Turtle Island News and Two Row Times. Since it has now been determined that the Guelph Street Bridge needs to be widened for Highway 7 New, this Design and Construction Report (DCR) is being prepared to document the Guelph Street Bridge widening.

The widening of the Guelph Street Bridge is scheduled to be included with the resurfacing of Highway 85 and Highway 7/85 from Krug Street northerly to 0.1 km south of Lancaster Street, repairs to seven bridges and one culvert and installation of traffic counting loops/stations (GWP 3110-09-00). The remainder of Highway 7 New will be constructed in subsequent phases, including the Shirley Avenue extension and Victoria Street Bridge replacement. The timing for construction the improvements to Highway 85 and Highway 7/85 is anticipated for later in 2015, subject to completing this Detailed Design Study, obtaining environmental approvals, and the availability of funding.

1.2 The Environmental Assessment Process

The Ministry of Transportation's Class Environmental Assessment for Provincial Transportation Facilities (Class EA) was approved under the Ontario Environmental Assessment Act (EA Act) in the fall of 1999 and amended in 2000. This planning document defines the group of projects and activities and the environmental assessment process that MTO has committed to follow for these projects. This project has followed the Class EA for Provincial Transportation Facilities (2000) process for Group 'A' projects.

The MTO Class EA process is principle based. The following underlies the MTO Class EA process:

- ▶ Transportation engineering principles;
- ▶ Environmental protection principles;
- ▶ External consultation principles;
- ▶ Evaluation principles that are intended to achieve the best overall balance of these principles;
- ▶ Documentation principles;
- ▶ Part II Order (bump-up) principles; and
- ▶ Environmental clearance principles to proceed.

As identified in the Notice of Study Commencement advertised on August 30, 2014 in the Waterloo Region Record and on September 3, 2014 in the Two Row and Turtle Island News, the widening of the Guelph Street Bridge is being completed as a Group 'A' project for the detailed design stage component of the Highway 7 New Individual EA process. To be consistent with other detailed design components for Highway 7 New, the Individual EA process has been extended to apply to the Detailed Design Study for the Guelph Street Bridge widening, requiring that a Design and Construction Report (DCR) and Notice of Submission be completed.

This DCR is not eligible for a Part II Order (i.e. “bump-up”) under the provisions of the Ontario Environmental Assessment Act. However, there is an opportunity at any time during the MTO Class EA process for interested persons to provide comments and review outstanding issues. The DCR is available for a public and external agency review period from January 23, 2015 to February 22, 2015. Any concerns raised by members of the public, interested groups, or technical and external agencies during this review period should be discussed with MTO or their consultants.

1.3 Federal Approvals

The Canadian Environmental Assessment Act has recently undergone significant changes and is no longer “trigger” based. On July 6, 2012 CEAA (2012) came into effect which focuses on assessment of “designated projects.” Projects can be designated projects under CEAA (2012) if they fall within a:

- ▶ wildlife area – per section 2 of the Wildlife Area Regulations; and/or
- ▶ migratory bird sanctuary – as set out in the schedule to the Migratory Bird Sanctuary Regulations.

After reviewing the Regulations Designating Physical Activities, the proposed works for the Guelph Street Widening is not considered to be a “designated project.” Therefore, an assessment under the Canadian Environmental Assessment Act (2012) is not necessary.

Readers interested in obtaining additional information about the Canadian Environmental Assessment Act (2012) are encouraged to refer to: <http://www.ceaa.gc.ca>.

1.4 Purpose of Report

This DCR has been prepared to:

- ▶ Describe the improvements to be constructed for the Guelph Street Bridge widening at Highway 7/85;
- ▶ Describe specific environmental effects associated with the project and proposed mitigation;
- ▶ Identify measures that have been incorporated into the design and contract drawings; and
- ▶ Summarize the consultation undertaken with external agencies, affected/adjacent property owners and interested members of the public.

2 CONSULTATION / ENGAGEMENT PROCESS

Consultation is an integral component of the EA process and is carried out in conjunction with transportation engineering and environmental principles. It involves contact with external agencies (provincial, federal, municipal) and First Nation communities; the public and interested stakeholders. It provides a mechanism to define and respond to issues raised.

External agencies and interested stakeholders were contacted and informed of the proposed work and had an opportunity to comment on the design. The public consultation involved the use of an Ontario Government Notification (OGN) for the Study Commencement and an OGN for the Notice of Study Completion, and Design and Construction Report (DCR) submission. The OGNs were published in local papers (Waterloo Region Record, Two Row and Turtle Island News) and distribution of letters to specific individuals, businesses and government agencies. A project contact list was created using local contacts originally contacted as part of the Highway 7 New consultation program, the Region of Waterloo Municipal Class EA for the Victoria Street improvement, and contacts associated with the Highway 7/85 project (GWP 168-89-00 and GWP 3110-09-00).

The Notice of Study Completion was published on January 17, 2015 in the Waterloo Region Record and January 21, 2015 in the Two Row and Turtle Island News, notifying the public and agencies of the filing of this DCR. It provided details regarding where the report could be viewed and how to provide comment. A copy of the OGN for the project is included in **Appendix A**.

2.1 External Agencies and Municipalities

Provincial, federal and municipal agencies were contacted to inform them of the proposed work and involve them in the study process. Letters were mailed to each contact as part of the Study Commencement and the Study Completion. Copies of the letters are included in **Appendix A**.

The following list identifies those who were notified:

- ▶ Aboriginal Affairs and Northern Development Canada
- ▶ City of Kitchener
- ▶ Regional Municipality of Waterloo
- ▶ Department of Fisheries and Oceans
- ▶ Environment Canada
- ▶ Grand River Conservation Authority
- ▶ Local Members of Provincial Parliament (MPP)
- ▶ Métis Nation of Ontario Head Office
- ▶ Minister of the Attorney General
- ▶ Ministry of Aboriginal Affairs
- ▶ Ministry of Food and Rural Affairs
- ▶ Ministry of Municipal Affairs and Housing

- ▶ Ministry of Natural Resources and Forestry
- ▶ Ministry of Northern Development, Mines and Forestry
- ▶ Ministry of the Environment and Climate Change
- ▶ Ministry of Tourism Culture and Sport
- ▶ Northern Ontario Heritage Fund Corporation
- ▶ Ontario Provincial Police
- ▶ Office of the Federal Interlocutor for Métis and Non-status Indians – INAC
- ▶ Regional Municipality of Waterloo
- ▶ Township of Guelph/Eramosa
- ▶ Township of Woolwich
- ▶ Transport Canada

The Project Team met with the City of Kitchener on October 8, 2014 to provide an opportunity to review and comment on the Guelph Street design, the temporary closure of Guelph Street for approximately 18 weeks for the purposes of construction, and the proposed detour routes. Consultation with the City of Kitchener will continue during the construction phases.

2.2 Public

Extensive consultation was undertaken for Highway 7 New during the preliminary design stage and continued throughout the Initial Design Phase. External agencies and interested stakeholders were contacted and informed of the proposed highway designs, notified of changes to the design and given several opportunities to comment on pertinent environmental issues, attend stakeholder or agency meetings and Public Information Centres, and were invited to review environmental assessment documentation. Public consultation for the Highway 7 New Initial Design phase concluded May 9, 2014 to coincide with the end of the public review period for the Initial Design Report.

The public and local businesses along Victoria Street North, Shirley Avenue, Riverbend Drive, Bingeman Centre Drive and Guelph Street are included on the contact list for the project. The list is based on the Highway 7 New Initial Design phase consultation program, as updated during the Detailed Design Study to Advance Construction for Highway 7 New, Victoria Street Widening and Bridge Replacement, and Shirley Avenue Extension, and including relevant contacts from the Highway 85 and Highway 7/85 Detailed Design Study.

2.3 First Nations and Métis Communities

The following First Nations and Aboriginal groups were contracted as part of the filing for this DCR for the Guelph Street Bridge widening:

- ▶ Alderville First Nation
- ▶ Beausoleil First Nation (Christian Island)
- ▶ Curve Lake First Nation
- ▶ Chippewas of Georgina Island
- ▶ Six Nations of the Grand River
- ▶ Hiawatha First Nation
- ▶ Williams Treaties First Nations
- ▶ Mississaugas of the New Credit First Nation
- ▶ Chippewas of Rama First Nation
- ▶ Mississaugas of Scugog Island
- ▶ Chippewas of the Thames First Nation

3 DETAILED DESCRIPTION OF THE RECOMMENDED DESIGN

The recommended design includes the widening of the Highway 85 and Guelph Street Bridge to accommodate the future Highway 7 New and Highway 85 East-to-North (E-N) ramp construction.

3.1.1 Major Features of the Proposed Work – Guelph Street

The work includes:

- ▶ Widening the Guelph Street Bridge by 6 m to 7.3 m (variable width);
- ▶ Extending the length of existing structure for the future E-N ramp;
- ▶ Lowering Guelph Street to provide for the appropriate vertical clearances;
- ▶ Replacement of the local watermain and storm sewer to accommodate the lowering of Guelph Street;
- ▶ Utility relocations of Bell Canada, KW Hydro and Kitchener Gas to provide for the work;
- ▶ Identification of a local detour for the closure of Guelph Street for the duration of the work;
- ▶ Installation of sidewalks, curb and gutter and pavement reconstruction;
- ▶ Entrance modifications; and
- ▶ Illumination modifications

3.1.2 Utilities

The following utility companies were contacted to confirm if they have utilities within the limits of the project.

- ▶ Kitchener Wilmot Hydro Inc.
- ▶ City of Kitchener Utilities
- ▶ City of Kitchener Gas
- ▶ Region of Waterloo Utilities
- ▶ Bell Canada
- ▶ Rogers

Kitchener Wilmot Hydro has an aerial and underground plant in close proximity to the work that will be relocated prior to the start of the work. Kitchener Gas has a 150 mm diameter gas line that will be relocated and lowered prior to the start of the work. Bell Canada has two conduits that will be combined, lowered and relocated prior to the start of the work.

3.1.3 Illumination

The existing illumination within the existing overpass bridge will be extended to incorporate the extension of the project. The power supply for the illumination will be separated. Upon completion of the work, the City of Kitchener will be responsible for the operation and maintenance of the illumination.

3.1.4 Construction Staging

Guelph Street is expected to be closed at Highway 85, between Riverbend Drive and Sereda Road/Spring Valley Road for the duration of the work (approximately 18 weeks). Detour signage will be in place to advise of the closure and to identify an alternative route. Alternate routes will be available to the south via Wellington Street and to the north via Lancaster Street. The proposed construction staging and detour routes are included in **Appendix B**. Access will be closed to pedestrians during construction at Guelph Street due to hazards that cannot be mitigated.

4 POTENTIAL ENVIRONMENTAL EFFECTS, MITIGATION MEASURES AND COMMITMENTS TO FUTURE WORK

This section outlines the potential effects, preliminary mitigation measures and the commitments to future work. It is also recognized that additional details will be provided to agencies in support of obtaining permits and approvals. Mapping depicting the existing environmental conditions is presented in **Exhibit 4-1**.

Mitigation includes planning decisions, design features, construction requirements and construction constraints. The mitigation measures documented in this report have been developed with due consideration for the potential adverse effects of the project.

The key to ensuring effective environmental control and risk management during the project is the development and proactive implementation of an approach that:

- ▶ Identifies the environmental sensitivities;
- ▶ Presents the environmental protection measures in a way that can be translated into contractual requirements and for which compliance can be verified; and
- ▶ Includes a monitoring program, as required, that verifies that the environmental protection measures are being implemented and are effective.

It is important to ensure that the Contract Administrator and Contractor are made aware of, and are prepared, to deal with all environmental and operational concerns.

Environmental controls will be included in the contract documents to address specific environmental and operational concerns.

4.1 Erosion and Sediment Control

Without the implementation of appropriate mitigation measures, there is potential for erosion and generation of sediment during excavation and grading activities associated with the construction of the bridge widening. Relevant mitigation measures to control erosion and sediment include the following:

- ▶ Install temporary erosion and sediment control measures prior to construction, maintain them throughout construction; and remove at the end of construction as described in the Contract documentation;
- ▶ Limit vegetation removal to only what is required for construction;
- ▶ Re-stabilize and protect exposed surfaces as soon as possible after construction; and
- ▶ Ensure sediment control measures remain in place until groundcover in seeded areas has been established.



The requirement for comprehensive and sediment control best practices will be developed and implemented by the Contractor throughout construction in accordance with MTO Contract specifications.

4.2 Fisheries and Aquatic Habitat

There are no watercourses in the immediate vicinity of the Guelph Street Bridge crossing Highway 7/85.

4.3 Vegetation, Wildlife and Wildlife Habitat

Trees and vegetation exist within the areas of impact for construction. In particular, there will be direct impacts, including removal of a few planted deciduous trees on both sides of Highway 7/85, due to grading for roadway (west of bridge) and grading for entrances (east of bridge). These trees are all planted and have limited ecological value.

There is potential for indirect effects to adjacent features including:

- ▶ Potential damage to adjacent vegetation beyond the working zone;
- ▶ Release of construction-generated sediment to adjacent vegetation areas;
- ▶ Spills of contaminants, fuels and other materials that may reach natural areas;
- ▶ Damage from excessive or improper application of herbicides and pesticides for right-of-way maintenance requirements; and
- ▶ Disturbance of migratory birds or other wildlife during construction.

There are no anticipated effects to Species at Risk (SAR) or SAR habitat with the implementation of the recommended mitigation measures outlined in **Section 4.14**. This conclusion was supported through consultation with the Ministry of Natural Resources and Forestry (MNRF). However, there is always the potential that SAR (such as Blanding's Turtle, Snapping Turtle, Milksnake and Eastern Ribbonsnake) might be using marginal habitats along the right-of-way, most notably where the right-of-way is adjacent to natural areas, and that wildlife SAR may be encountered incidentally during construction.

To that end, measures to address any incidental encounters with wildlife during construction have been incorporated into the Contract Documents. Mitigation measures will be implemented to avoid or minimize impacts to vegetation, wildlife and wildlife habitat within and adjacent to the right-of-way during and following construction.

No active or inactive nests were observed at the Guelph Street Bridge during the field investigations for the Highway 85 and Highway 7/85 Detailed Design Study. Nonetheless, timing constraints will be applied to avoid vegetation clearing, including grubbing (April 1st to August 31st).

Occasionally bird species will precede or exceed the approximate breeding bird season window. It is the Contractor's responsibility to ensure that active nests of migratory species are not disturbed during construction. The structures will be monitored and inspected by the Contractor to ensure no migratory birds nest of them prior to structure works. If Barn Swallows are observed constructing nests or nesting, construction activities that might disturb the bird(s) shall cease and the Contractor will notify the Contract Administrator.

4.4 Groundwater

A Permit To Take Water will be required for the installation of the watermain and storm sewer as part of the reconstruction of Guelph Street within the Highway 85 right-of-way. An abandoned Region of Waterloo water well exists in proximity of the work and no impacts to the groundwater aquifer are anticipated.

4.5 Site Contamination / Management of Excess Materials

No impacts to high potential contaminated sites are expected since most of the works will be carried out on the highway right-of-way.

Moderate potential for concern includes road salt impacts and the presence of spills along Highway 7/85 and Guelph Street within the study area.

The Contractor will be required to implement the following measures in order to manage excess materials:

- ▶ Any temporarily stockpiled soil, debris or other excess materials, and any construction-related materials, will be properly contained (e.g. within silt fencing) in areas separated at least 30 m from watercourses and outside Environmentally Significant Areas in accordance with Ontario Provincial Standard Specification (OPSS) 180.
- ▶ All construction materials, excess materials and debris will be removed and appropriately disposed of following construction, in accordance with OPSS 180.
- ▶ Vehicle maintenance and fuelling will be conducted at the designated and properly contained maintenance areas in the works yards or at commercial garages. Remove and dispose of all construction-related debris following construction in appropriately designated areas.

4.6 Heritage

The proposed works will not impact built heritage or cultural heritage landscapes.

4.7 Archaeology

No impacts are anticipated given the extensive and intensive disturbances due to services and roadway construction within the study limits. A Stage 1 archaeology assessment was carried out for the resurfacing of Highway 7/85 and right-of-way, which included the rehabilitation of the Guelph Street Bridge, in 2012. The assessment recommended that the study corridor is free of archaeological concerns and that construction may proceed as planned. The *Stage 1 Archaeological Assessment* received archaeological acceptance from the Ministry of Tourism, Culture and Sport (MTCS) on August 28, 2012.

Should deeply buried archaeological remains be found on the property during construction activities, the Ministry of Tourism, Culture and Sport, along with the Six Nations of the Grand River should be notified immediately.

Should previously unknown or unassessed deeply buried archaeological resources be uncovered during development, they may be a new archaeological site and therefore subject to Section 48 (1) of the Ontario Heritage Act. The proponent or person discovering the archaeological resources must cease alteration of the site immediately and engage a licensed archaeologist to carry out archaeological fieldwork, in compliance with Section 48 (1) of the Ontario Heritage Act.

The Cemeteries Act, R.S.O. 1990 c. C.4 and the Funeral, Burial and Cremation Services Act, 2002, S.O. 2002, c.33 (when proclaimed in force) require that any person discovering human remains must notify the police or coroner and the Registrar of Cemeteries at the Ministry of Consumer Services.

4.8 Noise

As the proposed improvements to the Guelph Street Bridge widening will not bring current or future traffic closer to the existing Noise Sensitive Areas (NSAs) within the study area, the proposed improvements will not result in increased noise levels. As such, a review of noise mitigation was not warranted based on MTO Noise Policy.

A noise by-law exemption was requested from The City of Kitchener on December 15, 2014 for the Highway 7/85 Resurfacing from Krug St to Regional Rd 15 (King St), which included the proposed works at the Guelph Street Bridge.

To mitigate construction related noise, the Contractor will be required to keep idling of construction equipment to a minimum and to maintain equipment in good working order. Despite compliance with any noise control measures identified in the contract documents, complaints regarding noise will be addressed in accordance with the construction noise complaint process outlined in MTO's *Environmental Guide for Noise* (2006).

4.9 Property Requirements

Property has been identified and obtained as a part of the Highway 7 New project.

4.10 Construction Staging / Access

As noted previously, Guelph Street is expected to be closed at Highway 85, between Riverbend Drive and Sereda Road/Spring Valley Road for the duration of the work (approximately 18 weeks). Detour signage will be in place to advise of the closure and to identify an alternative route. Alternate routes will be available to the south via Wellington Street and to the north via Lancaster Street. The construction staging and detour routes are in **Appendix B**. Access will be closed to pedestrians during construction at Guelph Street due to hazards that cannot be mitigated.

4.11 Emergency Services

Emergency Medical Services (EMS), Fire and Police were consulted during Detailed Design Study and they will be notified of the exact timing for Guelph Street closure and detour routes during construction. Guelph Street will be closed at Highway 85 for the duration of the work. Traffic flow will be staged on the existing Highway 85 and Highway 7/85 core/ collector lanes.

4.12 Summary of Environmental Effects and Proposed Mitigation

Exhibit 4-2 summarizes the potential environmental effects, proposed mitigating measures and commitments to future work. It is intended that **Exhibit 4-2** will be used to track mitigation measures during construction.

With the implementation of the mitigation measures recommended in **Exhibit 4-2**, potential environmental impacts of the proposed works for the underpass can be avoided or minimized. All of the recommended construction mitigation measures will be incorporated into the contract documents.

Legend

MTO: Ministry of Transportation	EC: Environment Canada
MNRF: Ministry of Natural Resources and Forestry	EMS: Emergency Medical Services
MTCS: Ministry of Tourism, Culture and Sport	MOECC: Ministry of the Environment and Climate Change
DFO: Department of Fisheries and Oceans, Canada	

Exhibit 4-2 Summary of Potential Environmental Effects, Mitigation and Commitments to Future Work

I.D. #	Environmental Issue / Concern / Potential Effects	Concerned Agencies / Organizations	I.D. #	Mitigation / Protection / Monitoring
1.0	Erosion and Sediment	MTO MNRF	1.1	Erosion and sediment control best management practices, such as timing constraints, silt fences and flow check will be implemented during construction.
			1.2	Measures will address all potential on-site and off-site effects including, but not limited to, spring run-off.
			1.3	Measures will be maintained, monitored and modified as necessary to ensure that the measures are effective.
2.0	Vegetation	MTO MNRF	2.1	Erosion and sediment control measures will be implemented during all phases of construction, clean-up and restoration to prevent sediment laden runoff from entering any adjacent vegetated areas.
			2.2	All work areas or other disturbed surfaces will be stabilized and re-vegetated as soon as feasible following construction.
			2.3	Appropriate clearing and disposal of all construction-related debris will occur following construction.
			2.4	The Contractor will ensure proper handling of potentially toxic construction materials and ensure proper spills management protocols are in place and implemented.
			2.5	Appropriate vegetation clearing techniques will be utilized and clearing will be minimized to that necessary to complete the works.

I.D. #	Environmental Issue / Concern / Potential Effects	Concerned Agencies / Organizations	I.D. #	Mitigation / Protection / Monitoring
3.0	Wildlife, Terrestrial Habitats	MTO EC MNRF	3.1	Migratory Bird Protection – The Contractor shall not destroy the active nests (nests with eggs or young birds), or wound or kill birds, of species protected under the Migratory Birds Convention Act (MBCA) and/or Regulations under the Act. If active nests are encountered, the Contractor will cease all works that might harm the birds or their nests and notify the Contract Administrator. The Contractor is responsible for implementing nesting deterrent and/or exclusion measures to prevent the development of active nests on the bridge during construction activities.
			3.2	Any wildlife incidentally encountered during construction will not be knowingly harmed and will be allowed to move away from the construction area on its own if at all possible. In the event that an animal encountered during construction does not move from the construction zone, or is injured, the Contract Administrator will be notified.
			3.3	In the event that a Species-at-Risk (SAR), or potential SAR, is found within the construction area, the Contractor will immediately cease all work that could potentially harm the animal and will contact the Contract Administrator for direction, as these animals are protected under the Ontario Endangered Species Act (2007). The Contract Administrator or his Environmental Inspector will then contact the MNRF SAR Biologist for advice.
			3.4	If exclusion measures are not used and Barn Swallow builds a nest on a bridge, construction must cease until the young have fully fledged.
4.0	Groundwater and Surface Water	MTO MOECC	4.1	Groundwater and surface water protection will be achieved through the application of proper fuel or other contaminant spills management during construction ensuring proper dewatering, surface flow management and sediment control throughout construction, proper restoration following construction, and proper facility management during operations and maintenance.

Design and Construction Report
Highway 7 New and Highway 85 Interchange
E-N Ramp widening of the Highway 85 and Guelph Street Overpass

I.D. #	Environmental Issue / Concern / Potential Effects	Concerned Agencies / Organizations	I.D. #	Mitigation / Protection / Monitoring
5.0	Management of Excess Materials	MTO MOECC	5.1	Any temporarily stockpiled soil, debris or other excess materials, and any construction-related materials, will be properly contained (e.g. within silt fencing) in areas separated at least 30 m from watercourses and outside Environmentally Significant Areas in accordance with OPSS 180.
			5.2	All construction materials, excess materials and debris will be removed following construction and appropriately disposed of following construction in appropriately designated areas and in accordance with OPSS 180.
			5.3	Conduct vehicle maintenance and fuelling at the designated and properly contained maintenance areas in the works yards or at commercial garages. Remove and dispose of all construction-related debris following construction in appropriately designated areas.
			5.4	Direct responsibility for containment and clean-up of spills and abandoned materials on MTO highway facilities rests with the owner of the material and person in control of the material at the time of the spill or abandonment. Where spills or abandoned materials occur on MTO highway facilities, MTO may assist where persons legally responsible cannot be located or not able to respond. In the event of a spill of MTO material by MTO staff, MTO will undertake all notification, containment and clean-up responsibilities required by provincial and federal legislation.
6.0	Archeological Resources	MTO MTCS	6.1	A Stage 1 Archaeological Assessment recommending that the study corridor is free of archaeological concerns and that construction may proceed as planned received archaeological acceptance from the Ministry of Tourism, Culture and Sport (MTCS) on August 28, 2012.
			6.2	Should construction extend beyond the current right-of-way, a Stage 2 Archaeological Assessment will be required.

Design and Construction Report
Highway 7 New and Highway 85 Interchange
E-N Ramp widening of the Highway 85 and Guelph Street Overpass

I.D. #	Environmental Issue / Concern / Potential Effects	Concerned Agencies / Organizations	I.D. #	Mitigation / Protection / Monitoring
			6.3	Any person discovering human remains must immediately notify the police or coroner and the Registrar of Cemeteries, Ministry of Government Services.
7.0	Noise	MTO Local Municipalities	7.1	A noise by-law exemption was requested to the City of Kitchener on December 15, 2014 for any night work required.
			7.2	The Contractor will be required to keep idling of construction equipment to a minimum and to maintain equipment in good working order to reduce noise from construction activities.
			7.3	If complaints regarding construction noise arise during construction, they will be investigated according to the provisions of the existing MTO <i>Environmental Noise Guide</i> (October 2006). The Guide states that any complaints from the public will require verification by MTO that the general noise control measures agreed to are in effect. If not, MTO will warn the contractor of any problems, and enforce its contract.
8.0	Air Quality and Dust	MTO MOECC	8.1	Dust control shall be completed using water, not chemical suppressants, and in accordance with the Ministry's general conditions.
9.0	Transportation	MTO City of Kitchener City of Waterloo EMS Property Owners	9.1	Advance road signage notifying motorists of the construction and detour route will be provided prior to the start of construction and closures.
			9.2	Local emergency medical services and the Ontario Provincial Police will be notified of construction staging, start of construction, etc. to minimize delay in emergency response times during and after construction.
			9.3	Traffic flow will be staged on the existing Highway 85 and Highway 7/85 core/collector lanes.

Design and Construction Report
Highway 7 New and Highway 85 Interchange
E-N Ramp widening of the Highway 85 and Guelph Street Overpass

I.D. #	Environmental Issue / Concern / Potential Effects	Concerned Agencies / Organizations	I.D. #	Mitigation / Protection / Monitoring
			9.4	Access will be closed to pedestrians during construction at Guelph Street due to hazards that cannot be mitigated.

5 MONITORING

MTO has an internal process to identify and address updates to the Ontario Provincial Standard Specifications, MTO Special Provisions and Non-Standard Special Provisions. This includes ongoing review of unanticipated events that occur during other construction contracts and incorporation of required updates into future contract provisions. This helps to assess the effectiveness of the contract provisions to ensure that they are providing the expected control and/or protection.

On-site construction administration / inspection staff (retained by MTO) will ensure that the environmental protection measures outlined in this report are carried out.

If the impacts of construction are different than anticipated, or if the method of construction is such that there are greater than anticipated impacts, the Contractor's methods of operation will be changed or modified to reduce those impacts.

During construction, the on-site Contract Administrator ensures that implementation of mitigating measures and key design features are consistent with the contract and external commitments. In addition, the effectiveness of the environmental mitigating measures is assessed to ensure that:

- ▶ Individual mitigating measures are providing the expected control and/or protection;
- ▶ Composite control and/or protection provided by the mitigating measures is adequate; and
- ▶ Additional mitigating measures are provided, as required, for any unanticipated environmental problems that may develop during construction.

A qualified Environmental Inspector, as part of the Contractor Administrator assignment, will be retained to provide oversight on specific works to ensure that works are in accordance with the contract specifications.

On-site construction administration staff will ensure that the environmental measures outlined in the contract are carried out. In the event that problems develop, the MTO Environmental Section and appropriate provincial ministries and/or agencies will be contacted to provide additional input and recommendation.

APPENDIX A

NOTIFICATION MATERIALS

NOTICE OF STUDY COMPLETION

Detailed Design Study to Advance Construction for Highway 7 New Guelph Street Bridge Widening

THE STUDY

The Ontario **Ministry of Transportation (MTO)** has retained **MMM Group Limited (MMM)** to complete the detailed design for the widening of the Guelph Street Bridge at Highway 85 (see key plan below), as part of the Ministry's commitment to advance construction work for the approved Highway 7 New – Kitchener to Guelph project (G.W.P. 408-88-00).

The work will involve widening of the Guelph Street Bridge to the east in order to accommodate Highway 7 New. During construction, staging of the works will require a temporary road closure of Guelph Street between Riverbend Drive and Sereda Road/Spring Valley Road for approximately eighteen weeks. Alternate routes will be available. These routes will direct vehicles to the south via Wellington Street and to the north via Lancaster Street.

The widening of the Guelph Street Bridge is scheduled to be included with the resurfacing of Highway 7/85 from Krug Street northerly to 0.1 km south of Lancaster Street. Construction is anticipated to begin in May 2015. The remainder of Highway 7 New will be constructed in subsequent phases, including the Shirley Avenue extension and Victoria Street Bridge replacement.

THE PROCESS

This project has followed the *Class Environmental Assessment (Class EA) for Provincial Transportation Facilities (2000)* process for Group 'A' projects. Therefore, a Design and Construction Report (DCR) has been prepared to document the detailed design for the Guelph Street Bridge widening at Highway 85. The DCR is not eligible for a Part II Order, 'bump-up' request. The report will be available for a 30-day public review period from **January 23, 2015 to February 22, 2015** at the following locations during regular business hours:

**Ministry of the Environment
and Climate Change**
Environmental Assessment and
Approvals Branch
2 St. Clair Avenue West, Floor 12A
Toronto, Ontario

**Ministry of the Environment
and Climate Change**
Guelph District Office
1 Stone Road West
Guelph, Ontario

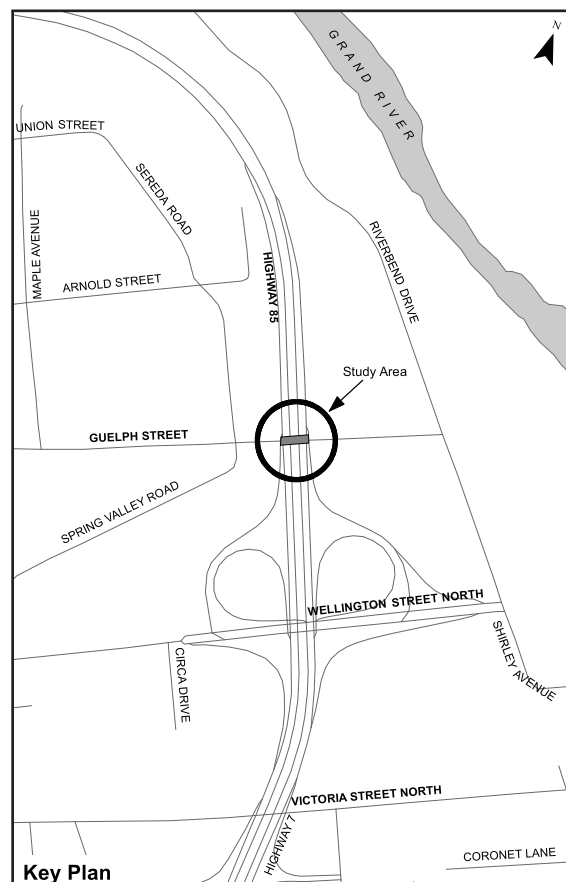
Ministry of Transportation
West Region, Front Lobby
659 Exeter Road
London, Ontario

Kitchener Public Library
85 Queen Street North
Kitchener, Ontario

**Ministry of the Environment
and Climate Change**
West Central Regional Office
119 King Street West, 12th Floor
Hamilton, Ontario

Regional Municipality of Waterloo
Clerk's Department
150 Frederick Street
Kitchener, Ontario

City of Kitchener
Clerk's Department
200 King Street West
Kitchener, Ontario



COMMENTS

Interested persons are encouraged to review this document and provide comments in writing by **February 28, 2015**. Please contact one of the following Project Team members for more information:

Ms. Alla Dinerman, P.Eng.
Manager – Highways Transportation
MMM Group Limited
100 Commerce Valley Drive West
Thornhill, ON L3T 0A1
tel: 905-882-7212
fax: 905-882-0055
e-mail: dinermana@mmm.ca

Mr. Robert Bakalarczyk, P.Eng.
Senior Project Engineer
Ministry of Transportation, West Region
Planning and Design Section
659 Exeter Road, 3rd Floor
London, ON N6E 1L3
tel: 519-873-4602
fax: 519-873-4600
e-mail: robert.bakalarczyk@ontario.ca

If you have any accessibility requirements in order to participate in this project, please contact one of the Project Team members.

Comments and information are being collected to assist the study team in meeting the requirements of the *Environmental Assessment Act*. This information will be maintained on file for use during the project and may be included in project documentation. With the exception of personal information, all comments will become part of the public record in accordance with the *Freedom of Information and Protection of Privacy Act R.S.O., 1990, c.F.31*.

**Ministry of
Transportation**

Provincial Highways Management
Planning and Environmental
Section
West Region
659 Exeter Road, 3rd Floor
London, ON N6E 1L3
Tel: 519-873-4100
Fax: 519-873-4600

**Ministère des
Transports**

Gestion des routes provinciales
Section de planification et de
l'environnement
Région de l'Ouest
659 rue Exeter, 3^e étage
London, ON N6E 1L3
Tél.: 519-873-4100
Téléc.: 519-873-4600



January 16, 2015

[Redacted address block]

Example of Letters to First Nations

Dear Chief [Redacted]

Subject: Notice of Study Completion – Detailed Design Study to Advance Construction for Highway 7 New; Guelph Street Bridge Widening

The Ministry of Transportation, Ontario (MTO) has retained MMM Group Limited (MMM) to complete the detailed design for the widening of the Guelph Street Bridge at Highway 85 (key plan), as part of the ministry's commitment to advance construction work for the approved Highway 7 New – Kitchener to Guelph project (GWP 408-88-00). The project will include widening of the Guelph Street Bridge to the east in order to accommodate Highway 7 New. During construction, staging of the works will require a temporary road closure of Guelph Street between Riverbend Drive and Sereda Road/Spring Valley Road for approximately eighteen (18) weeks. Alternate routes will be available. These routes will direct vehicles to the south via Wellington Street and to the north via Lancaster Street.

A Design and Construction Report (DCR) has been prepared to document the detail design for the Guelph Street Bridge Widening. The DCR is not eligible for a Part II Order, "bump-up" request. The report will be available for a 30-day public review period beginning **January 23, 2015**. Please refer to the attached newspaper notice for more details on where to review the report.

We look forward to receiving your comments on this project, which can be provided in writing by **February 22, 2015**. Comments and information regarding this project are being collected to assist the study team in meeting the requirements of the *Environmental Assessment Act*. Please contact the undersigned or the consultant project manager at (905) 882-7212 or by email at dinermana@mmm.ca, if you require assistance, or additional information.

Yours truly,

Cathy Giesbrecht
Head - Environmental
Ministry of Transportation
West Region

cc: Robert Bakalarczyk (MTO), Susan Wagter (MTO), Minh Mach (MMM), Dan Green (MMM), Jeff Warren (MMM), Greg Moore (MMM), Sonia Rankin (MMM)
encl. Notice of Study Completion

With the exception of personal information, all comments will become part of the public record in accordance with the *Freedom of Information and Protection of Privacy Act R.S.O., 1990, c.F.31*.

MMM Group Limited
100 Commerce Valley Drive West
Thornhill, ON Canada L3T 0A1
t: 905.882.1100 | f: 905.882.0055

www.mmm.ca

January 15, 2015

16.08027.003.EN4

Ms. Daiene Vernile
MPP - Kitchener Centre
1770 King Street East
Unit 6C
Kitchener, Ontario N2G 2P1
dvernile.mpp.co@liberal.ola.org

Dear Ms. Vernile,

Subject: Notice of Study Completion – Detailed Design Study to Advance Construction for Highway 7 New; Guelph Street Bridge Widening

The Ministry of Transportation, Ontario (MTO) has retained MMM Group Limited (MMM) to complete the detailed design for the widening of the Guelph Street Bridge at Highway 85 (key plan), as part of the ministry's commitment to advance construction work for the approved Highway 7 New – Kitchener to Guelph project (GWP 408-88-00). The project will include widening of the Guelph Street Bridge to the east in order to accommodate Highway 7 New. During construction, staging of the works will require a temporary road closure of Guelph Street between Riverbend Drive and Sereda Road/Spring Valley Road for approximately eighteen (18) weeks. Alternate routes will be available. These routes will direct vehicles to the south via Wellington Street and to the north via Lancaster Street.

A Design and Construction Report (DCR) has been prepared to document the detail design for the Guelph Street Bridge Widening. The DCR is not eligible for a Part II Order, "bump-up" request. The report will be available for a 30-day public review period beginning **January 23, 2015**. Please refer to the attached newspaper notice for more details on where to review the report.

We look forward to receiving your comments on this project, which can be provided in writing by **February 22, 2015**. Comments and information regarding this project are being collected to assist the study team in meeting the requirements of the *Environmental Assessment Act*. Please contact the undersigned at (905) 882-7212 or by email at dinermana@mmm.ca, if you require assistance, or additional information.

Yours truly,

MMM Group Limited



Alla Dinerman, P.Eng.
Manager - Highways
Transportation

cc: Robert Bakalarczyk (MTO), Susan Wagter (MTO), Minh Mach (MMM), Dan Green (MMM), Jeff Warren (MMM), Greg Moore (MMM), Sonia Rankin (MMM)

encl. Notice of Study Completion

With the exception of personal information, all comments will become part of the public record in accordance with the *Freedom of Information and Protection of Privacy Act R.S.O., 1990, c.F.31*.

MMM Group Limited
100 Commerce Valley Drive West
Thornhill, ON Canada L3T 0A1
t: 905.882.1100 | f: 905.882.0055

www.mmm.ca

January 15, 2015

16.08027.003.EN4

Ms. Catherine Fife
MPP - Kitchener-Waterloo
22 King Street South
Unit 401
Kitchener, Ontario N2J 1N8
cfife-co@ndp.on.ca

Dear Ms. Fife,

Subject: Notice of Study Completion – Detailed Design Study to Advance Construction for Highway 7 New; Guelph Street Bridge Widening

The Ministry of Transportation, Ontario (MTO) has retained MMM Group Limited (MMM) to complete the detailed design for the widening of the Guelph Street Bridge at Highway 85 (key plan), as part of the ministry's commitment to advance construction work for the approved Highway 7 New – Kitchener to Guelph project (GWP 408-88-00). The project will include widening of the Guelph Street Bridge to the east in order to accommodate Highway 7 New. During construction, staging of the works will require a temporary road closure of Guelph Street between Riverbend Drive and Sereda Road/Spring Valley Road for approximately eighteen (18) weeks. Alternate routes will be available. These routes will direct vehicles to the south via Wellington Street and to the north via Lancaster Street.

A Design and Construction Report (DCR) has been prepared to document the detail design for the Guelph Street Bridge Widening. The DCR is not eligible for a Part II Order, "bump-up" request. The report will be available for a 30-day public review period beginning **January 23, 2015**. Please refer to the attached newspaper notice for more details on where to review the report.

We look forward to receiving your comments on this project, which can be provided in writing by **February 22, 2015**. Comments and information regarding this project are being collected to assist the study team in meeting the requirements of the *Environmental Assessment Act*. Please contact the undersigned at (905) 882-7212 or by email at dinermana@mmm.ca, if you require assistance, or additional information.

Yours truly,

MMM Group Limited



Alla Dinerman, P.Eng.
Manager - Highways
Transportation

cc: Robert Bakalarczyk (MTO), Susan Wagter (MTO), Minh Mach (MMM), Dan Green (MMM), Jeff Warren (MMM), Greg Moore (MMM), Sonia Rankin (MMM)
encl. Notice of Study Completion

With the exception of personal information, all comments will become part of the public record in accordance with the *Freedom of Information and Protection of Privacy Act R.S.O., 1990, c.F.31*.

MMM Group Limited
100 Commerce Valley Drive West
Thornhill, ON Canada L3T 0A1
t: 905.882.1100 | f: 905.882.0055

www.mmm.ca

January 15, 2015

16.08027.003.EN4

Mr. Michael Harris
MPP - Kitchener-Conestoga
4281 King Street East
Unit 4
Kitchener, Ontario N2P 1E9
michael.harris@pc.ola.org

Dear Mr. Harris,

Subject: Notice of Study Completion – Detailed Design Study to Advance Construction for Highway 7 New; Guelph Street Bridge Widening

The Ministry of Transportation, Ontario (MTO) has retained MMM Group Limited (MMM) to complete the detailed design for the widening of the Guelph Street Bridge at Highway 85 (key plan), as part of the ministry's commitment to advance construction work for the approved Highway 7 New – Kitchener to Guelph project (GWP 408-88-00). The project will include widening of the Guelph Street Bridge to the east in order to accommodate Highway 7 New. During construction, staging of the works will require a temporary road closure of Guelph Street between Riverbend Drive and Sereda Road/Spring Valley Road for approximately eighteen (18) weeks. Alternate routes will be available. These routes will direct vehicles to the south via Wellington Street and to the north via Lancaster Street.

A Design and Construction Report (DCR) has been prepared to document the detail design for the Guelph Street Bridge Widening. The DCR is not eligible for a Part II Order, "bump-up" request. The report will be available for a 30-day public review period beginning **January 23, 2015**. Please refer to the attached newspaper notice for more details on where to review the report.

We look forward to receiving your comments on this project, which can be provided in writing by **February 22, 2015**. Comments and information regarding this project are being collected to assist the study team in meeting the requirements of the *Environmental Assessment Act*. Please contact the undersigned at (905) 882-7212 or by email at dinermana@mmm.ca, if you require assistance, or additional information.

Yours truly,

MMM Group Limited



Alla Dinerman, P.Eng.
Manager - Highways
Transportation

cc: Robert Bakalarczyk (MTO), Susan Wagter (MTO), Minh Mach (MMM), Dan Green (MMM), Jeff Warren (MMM), Greg Moore (MMM), Sonia Rankin (MMM)
encl. Notice of Study Completion

With the exception of personal information, all comments will become part of the public record in accordance with the *Freedom of Information and Protection of Privacy Act R.S.O., 1990, c.F.31*.

MMM Group Limited
100 Commerce Valley Drive West
Thornhill, ON Canada L3T 0A1
t: 905.882.1100 | f: 905.882.0055

www.mmm.ca

January 16, 2015

16.08027.003.EN4

«Title» «FirstName» «LastName»

Agency/Stakeholder Sample

«Job_TitlePosition»

«Company1»

«Company_2»

«Address1»

«Address2»

«City», «Province» «PostalCode»

«email»

«GreetingLine»

Subject: Notice of Study Completion – Detailed Design Study to Advance Construction for Highway 7 New; Guelph Street Bridge Widening

The Ministry of Transportation, Ontario (MTO) has retained MMM Group Limited (MMM) to complete the detailed design for the widening of the Guelph Street Bridge over Highway 85 (key plan), as part of the ministry's commitment to advance construction work for the approved Highway 7 New – Kitchener to Guelph project (GWP 408-88-00). The project will include widening of the Guelph Street Bridge to the east in order to accommodate Highway 7 New. During construction, staging of the works will require a temporary road closure of Guelph Street between Riverbend Drive and Sereda Road/Spring Valley Road for approximately eighteen (18) weeks. Alternate routes will be available. These routes will direct vehicles to the south via Wellington Street and to the north via Lancaster Street.

A Design and Construction Report (DCR) has been prepared to document the detail design for the Guelph Street Bridge Widening. The DCR is not eligible for a Part II Order, "bump-up" request. The report will be available for a 30-day public review period beginning **January 23, 2015**. Please refer to the attached newspaper notice for more details on where to review the report.

We look forward to receiving your comments on this project, which can be provided in writing by **February 22, 2015**. Comments and information regarding this project are being collected to assist the study team in meeting the requirements of the *Environmental Assessment Act*. Please contact the undersigned at (905) 882-7212 or by email at dinermana@mmm.ca, if you require assistance, or additional information.

Yours truly,

MMM Group Limited

Alla Dinerman, P.Eng.
Manager - Highways
Transportation

cc: Robert Bakalarczyk (MTO), Susan Wagter (MTO), Minh Mach (MMM), Dan Green (MMM), Jeff Warren (MMM), Greg Moore (MMM), Sonia Rankin (MMM)
encl. Notice of Study Completion

With the exception of personal information, all comments will become part of the public record in accordance with the *Freedom of Information and Protection of Privacy Act R.S.O., 1990, c.F.31*.

Project Contact List: Public Consultation

- | | |
|--------------------------------------------------------------------------------------------------------------------------------------------------------------------------------------------------------------------------------------------------------------------------------------------------------------------------------------------------------------------------------------------------------------------------------------------------------------------------------------------------------------------------------------------------------------------------------------------------------------------------------------------------------------------------------------------------------------------------------------------------------------------------------------------------------------------------------------------------------------------------------------------------------------------------------------------------------------------------------------------------------------------------------------------------------------------------------------------------------------------------------------------------------------------------------------------------------------------------------------------------------------------------------------------------------------------------------------------------------------------------------------------------------------------------------------------------------------------------------------------------------------------------------------------------------------------------------------------------------------------------------------------------------------------------------------------------------------------------------------------------------------------------------------------------------------------------------------------------------------------------------------------------------------------------------------------------------------------------------------------------------------------------------------------------------------------------------------------------------------------------------------------------------------------------------------------------------------------------------------|----------------------------------------------------------------------------------------------------------------------------------------------------------------------------------------------------------------------------------------------------------------------------------------------------------------------------------------------------------------------------------------------------------------------------------------------------------------------------------------------------------------------------------------------------------------------------------------------------------------------------------------------------------------------------------------------------------------------------------------------------------------------------------------------------------------------------------------------------------------------------------------------------------------------------------------------------------------------------------------------------------------------------------------------------------------------------------------------------------------------------------------------------------------------------------------------------------------------------------------------------------------------------------------------------------------------------------------------------------------------------------------------------------------------------------------------------------------------------------------------------------------------------------------------------------------------------------------------------------------------------------------------------------------------------------------------------------------------------------------------------------------------------------------------------------------------------------------------------------------------------------------------------------------------------------------------------------------------------------------------------------------------------------|
| <ul style="list-style-type: none"> • Director (A), Facilities, Emergency Management, Security Branch, Ontario Provincial Police, • Director of Community & Corporate Planning, City of Kitchener, • Director of Engineering & Planning Services, Township of Woolwich, Planning and Development • Director of Operations, City of Kitchener, • Director of Transportation Planning, Region of Waterloo, • Director of Transportation, Region of Waterloo, • Director Transportation Services, City of Waterloo, • Director, Capital Projects and Services, City of Waterloo, • Director, City of Kitchener, Engineering Services • Director, Council and Administrative Services/Regional Clerk, Region of Waterloo, • Director, Liquor Control Board of Ontario, c/o Real Estate Dept. 836 • Director, Ministry of Environment and Climate Change, Environmental Assessment & Approvals Branch • Director, Ministry of Environment and Climate Change, West Central Region • Director, Rapid Transit, Region of Waterloo, • Director, Region of Waterloo Emergency Medical Services, • Director, Region of Waterloo, Emergency Medical Services Division • Director, Region of Waterloo, Transportation Division, Transportation and Environmental Services • Director, Transportation Planning, City of Kitchener, Development & Technical Services • Discount Auto Parts, • Discount Auto Wreckers, • Distribution Design Supervisor, Kitchener-Wilmot Hydro Inc., • District Manager - District 6, Western Regional Office #4, Liquor Control Board of Ontario, • District Manager – Guelph District Office, Ministry of Environment and Climate Change – MOE District Contact, • Donald Pawelko, • Don's Trailer Service, • Earl's Auto Parts Ltd, • Eastwood Printing, • Eco Garage Doors, • Econo Copy, • Economical Insurance Group, • Economy Distribution & Supply, • Edcom Multimedia Products, | <ul style="list-style-type: none"> • Elba Saldana, • Elementary School Nutrition Services, • Engineering Technologist – Corridor Management, Regional Municipality of Waterloo, • Engineering Technologist, Corridor Management, Region of Waterloo, Transportation Division, Transportation and Environmental Services • Environmental Assessment Coordinator, Ministry of the Environment and Climate Change, Guelph District Office • Environmental Project Manager, Capital Projects and Services, City of Waterloo, • Ergonomic Lifting Solution, • Erinvale Food Sales, • Factory Shoe, • Factory Shoe, • Family Mediation Canada, • Fashion Two-Twenty Cosmetics, • FILAN INC., • Fire Chief, Kitchener Fire Department, • Flyby Motorsports, • Forever On Dvd, • Form and Building Supply, • FORMAFENCE K-W, • Fritz Electric Inc, • General Manager and Owner, Ashton Pools Spas & Fitness, • General Manager of Protective Services & Fire Chief, Waterloo Fire Rescue, • General Manager, Conestoga Mall, • General Manager, Development Services, City of Waterloo, • General Manager, Goderich – Exeter Railway, • General Manager, Public Works Services, City of Waterloo, • Gentry Hair Styling, • George Weston Limited, Corporate Office • GODAL HOLDINGS LIMITED, • Golden Windows Limited, • Grace Counselling Connection, • Grand River Accessibility Advisory Committee, • Grand River Glassworks, • Grand River Transit, • H Kerr Construction Ltd, • H M B Hair Center, • Hamilton Regional Indian Centre, • Harrison Pet Products Inc, • Henry Walser Funeral Home Ltd, • Hergott's Garage, • Herman's Auto Trim, |
|--------------------------------------------------------------------------------------------------------------------------------------------------------------------------------------------------------------------------------------------------------------------------------------------------------------------------------------------------------------------------------------------------------------------------------------------------------------------------------------------------------------------------------------------------------------------------------------------------------------------------------------------------------------------------------------------------------------------------------------------------------------------------------------------------------------------------------------------------------------------------------------------------------------------------------------------------------------------------------------------------------------------------------------------------------------------------------------------------------------------------------------------------------------------------------------------------------------------------------------------------------------------------------------------------------------------------------------------------------------------------------------------------------------------------------------------------------------------------------------------------------------------------------------------------------------------------------------------------------------------------------------------------------------------------------------------------------------------------------------------------------------------------------------------------------------------------------------------------------------------------------------------------------------------------------------------------------------------------------------------------------------------------------------------------------------------------------------------------------------------------------------------------------------------------------------------------------------------------------------|----------------------------------------------------------------------------------------------------------------------------------------------------------------------------------------------------------------------------------------------------------------------------------------------------------------------------------------------------------------------------------------------------------------------------------------------------------------------------------------------------------------------------------------------------------------------------------------------------------------------------------------------------------------------------------------------------------------------------------------------------------------------------------------------------------------------------------------------------------------------------------------------------------------------------------------------------------------------------------------------------------------------------------------------------------------------------------------------------------------------------------------------------------------------------------------------------------------------------------------------------------------------------------------------------------------------------------------------------------------------------------------------------------------------------------------------------------------------------------------------------------------------------------------------------------------------------------------------------------------------------------------------------------------------------------------------------------------------------------------------------------------------------------------------------------------------------------------------------------------------------------------------------------------------------------------------------------------------------------------------------------------------------------|

Project Contact List: Public Consultation

- 2013029 ONTARIO INC.,
- 2-Em Natural Elements,
- 793366 ONTARIO INC,
- A A A Allied Doors Services,
- A Dombroskie,
- Acutus Consulting,
- Administrative Assistant, Delcan Corporation,
- A-K & Lippert Plastics Kitchener Plastics Ltd.,
- Alderville First Nation,
- Alfran Enterprizes,
- Alliance Home Healthcare Services,
- Amber Steel,
- Andreas Van Gastel (realtor, Wellington St. and Breslau to Township line area),
- Area Planner, Region of Waterloo, Planning /Development
- Assistant CAO, Grand River Conservation Authority,
- Auto-Camping Ltd,
- Ball Construction Inc.,
- Barrister & Solicitor Coordinator, Williams Treaties First Nations,
- Bath Solutions,
- Beatrice Distributing,
- Beausoleil First Nation (Christian Island),
- Beaver Gas Bars,
- Beck Music,
- Bell Canada, Access Network Provisioning
- Bellyup Inc,
- Bencom Fsgi,
- Bingemans Inc,
- Bodycote,
- Breakout Printing,
- Bricas Multi-Trade Inc.,
- Brick Brewery Distribution Centre,
- Brimtronics Inc,
- Brolain Distributors Ltd,
- C&H Fire Suppression Systems,
- c/o Mr. Leroy Hill, Council Secretary, Haudenosaunee Six Nations Confederacy Council,
- Canadian Energy Strategies Inc,
- Canadian National Railway Company,
- Canadian Solar Solutions Inc.,
- Canito's Autobody,
- Capital Plumbing & Heating,
- Cathy's Beauty Salon,
- Chief Administrative Officer, City of Kitchener,
- Chief Administrative Officer, City of Waterloo,
- Chief Administrative Officer, Region of Waterloo,
- Chief of Police, Waterloo Regional Police,
- Chief Superintendent, Ontario Provincial Police, Western Region Headquarters,
- Chief, Chippewas of the Thames First Nation,
- Chief, Mississaugas of Scugog Island,
- Chief, Six Nations of the Grand River Territory, Haudenosaunee Confederacy Chiefs Council, c/o Haudenosaunee Development Institute
- Chippewas of Georgina Island,
- Chippewas of Rama First Nation,
- Chiropractor,
- Chris Michael Rmt,
- Christie Digital,
- Christie Digital,
- Circuit Scale Inc,
- City of Kitchener Utilities, Utilities Engineering
- City of Waterloo Councillor – Northeast Ward Four, City of Waterloo,
- City of Waterloo Councillor, Ward 3,
- Cleaning House Ltd The,
- CN,
- Coffee Clutch Donuts,
- Collins Engineering Group,
- Colour Collision Centre,
- Commissioner of Planning, Housing & Community Services, Region of Waterloo,
- Commissioner of Transportation & Environmental Services, Region of Waterloo,
- Confident Canines Companion Training,
- Construction Coordinator, Atria Networks Inc.,
- Construction Machinery Co,
- Coordinator Permits Administration, Union Gas,
- Cornerstone Properties Inc.,
- Councillor - Ward 1, c/o Office of the Mayor and Council,
- Councillor - Ward 10, c/o Office of the Mayor and Council,
- Creative Edge Signs & Graphics Incorporated,
- Creatively Beautiful Inc.,
- Curve Lake First Nation,
- Custom Auto Styling,
- Custom Leather,
- D.M.W Upholstery,
- D2d Canada,
- Dale Morland,
- Daltech,
- Deja Vu Salon & Spa,
- Deputy Fire Chief, Kitchener Fire Department,
- Design Wishes Inc,
- Dhan Systems Management Ifs Industrial & Financi,

Project Contact List: Public Consultation

- | | |
|-----------------------------------------------------------------------------------------------------------------------------------------------------------------------------------------------------------------------------------------------------------------------------------------------------------------------------------------------------------------------------------------------------------------------------------------------------------------------------------------------------------------------------------------------------------------------------------------------------------------------------------------------------------------------------------------------------------------------------------------------------------------------------------------------------------------------------------------------------------------------------------------------------------------------------------------------------------------------------------------------------------------------------------------------------------------------------------------------------------------------------------------------------------------------------------------------------------------------------------------------------------------------------------------------------------------------------------------------------------------------------------------------------------------------------------------------------------------------------------------------------------------------------------------------------------------------------------------------------------------------------------------------------------------------------------------------------------------------------------------------------------------------------------------------------------------------------------------------------------------------------------------------------------------------------------------|----------------------------------------------------------------------------------------------------------------------------------------------------------------------------------------------------------------------------------------------------------------------------------------------------------------------------------------------------------------------------------------------------------------------------------------------------------------------------------------------------------------------------------------------------------------------------------------------------------------------------------------------------------------------------------------------------------------------------------------------------------------------------------------------------------------------------------------------------------------------------------------------------------------------------------------------------------------------------------------------------------------------------------------------------------------------------------------------------------------------------------------------------------------------------------------------------------------------------------------------------------------------------------------------------------------------------------------------------------------------------------------------------------------------------------------------------------------------------------------------------------------------------------------------------------------------------------------------------------------------------------------------------------------------------------------------------------------------------------------------------------------------------------------------------------------------------------------------------------------------------------------------------------------------------------------------------------------------------------------------------------------------------------------------------|
| <ul style="list-style-type: none"> • Hiawatha First Nation, • Home & Park, • House Of Friendship, • Hybrid Turkeys, • Iceberg Vending Company Inc, • Immigration Solutions, • Infinite Lighting Inc, • Inspector, Waterloo Regional Police - Central Division, • Inspector, Waterloo Regional Police - South Division, • Inspector, Waterloo Regional Police -North Division, • IntegratelT, • Inter City Battery Ltd, • J Loh Associates, • Jamesway, • JC Group Inc., (Teresa Whyte, Property Management JC Group Inc.) • JLS Autobody & Collision, • JM Worth Enterprises, • Joe's Auto, • JP Architectural & Engineering Services Inc, • Jp Sportswear & Promotional Products, • Jt Autobody and Paint, • Kimbe MacMaster - Mortgage Intelligence, • Kindermusik Of Cambridge, • Kitchener Forging Limited, • Kitchener Glass, • Kitchener-Waterloo Constituency Office, • K-W Surplus Clearinghouse, • Laptop Warehouse, • Leis Dennis Contracting, • Liquor Control Board of Ontario, • Live & Learn, • Lloyd's Automotive Services, • M.R. Property Management Ltd., • MacDonald Curtiss CA, • MACDONALD, ANDREW SCOTT;MACDONALD,ANGELA ELAINE, • Mac's Convenience Stores, • Mainline Planning Services Inc., • Mainstream Logistics Inc., • Manager Community Planning and Development, Ministry of Municipal Affairs and Housing, • Manager Engineering, Planning and Watershed Restoration, Grand River Conservation Authority, • Manager of Planning, Waterloo Region District School Board, Planning Department | <ul style="list-style-type: none"> • Manager of Resource Planning, Grand River Conservation Authority, • Manager Parks Planning, City of Kitchener, • Manager, Access Network Provisioning, Bell Canada, • Manager, Liquor Control Board of Ontario, • Manager, OPP Facilities Section, Ontario Provincial Police, • Manager, Real Estate & Development, Petro-Canada (Kitchener), • Manager, Real Estate, Suncor Energy Products Inc., • Manager, Tourism Policy & Strategy Development, Ministry of Economic Development, Trade & Tourism • Manager, Transmission Lines Sustainment, Hydro One Networks Inc., • Manager, Water Services, Transportation and Environmental Services, Region of Waterloo, Engineering & Planning • Marin Autohaus, • Marriott's Auto Repair, • McCollin Autobody, • Mcr Stamping Inc, • McTaggart Water-Systems Limited, • Medi Go, • MGM Financial Services Inc, • MHBC Planning, • Mighton Engineering Inc, • Mississaugas of the New Credit First Nation, • Monarch Oil (Kitchener) Limited, • Mortgage Intelligence Bennett Capital, • MPP, Kitchener Centre, • MPP, Kitchener-Conestoga, • MPP, Kitchener-Waterloo, • Ms. Joanne Thomas, Six Nations Eco-Centre, • MTE Consultants Inc., • Municipal & Utility Relations SWR Ontario, Rogers Cable TV, • MURRAY BAUMAN INVESTMENTS LTD, • N'Amerind Friendship Centre, • Nal Path Insurance Brokers Inc, • Natural Sound, • Network Telecom, • Nicholson Computer Consulting, • Ontario Provincial Police (HSD-Cambridge), • Ontario Tank & Trailer Ltd., (Protank) • Onward Multi-Corp, • Operations Manager, City of Kitchener, • Optikon Corporation Limited, |
|-----------------------------------------------------------------------------------------------------------------------------------------------------------------------------------------------------------------------------------------------------------------------------------------------------------------------------------------------------------------------------------------------------------------------------------------------------------------------------------------------------------------------------------------------------------------------------------------------------------------------------------------------------------------------------------------------------------------------------------------------------------------------------------------------------------------------------------------------------------------------------------------------------------------------------------------------------------------------------------------------------------------------------------------------------------------------------------------------------------------------------------------------------------------------------------------------------------------------------------------------------------------------------------------------------------------------------------------------------------------------------------------------------------------------------------------------------------------------------------------------------------------------------------------------------------------------------------------------------------------------------------------------------------------------------------------------------------------------------------------------------------------------------------------------------------------------------------------------------------------------------------------------------------------------------------------|----------------------------------------------------------------------------------------------------------------------------------------------------------------------------------------------------------------------------------------------------------------------------------------------------------------------------------------------------------------------------------------------------------------------------------------------------------------------------------------------------------------------------------------------------------------------------------------------------------------------------------------------------------------------------------------------------------------------------------------------------------------------------------------------------------------------------------------------------------------------------------------------------------------------------------------------------------------------------------------------------------------------------------------------------------------------------------------------------------------------------------------------------------------------------------------------------------------------------------------------------------------------------------------------------------------------------------------------------------------------------------------------------------------------------------------------------------------------------------------------------------------------------------------------------------------------------------------------------------------------------------------------------------------------------------------------------------------------------------------------------------------------------------------------------------------------------------------------------------------------------------------------------------------------------------------------------------------------------------------------------------------------------------------------------|

Project Contact List: Public Consultation

- | | |
|--------------------------------------------------------------------------------------------------------------------------------------------------------------------------------------------------------------------------------------------------------------------------------------------------------------------------------------------------------------------------------------------------------------------------------------------------------------------------------------------------------------------------------------------------------------------------------------------------------------------------------------------------------------------------------------------------------------------------------------------------------------------------------------------------------------------------------------------------------------------------------------------------------------------------------------------------------------------------------------------------------------------------------------------------------------------------------------------------------------------------------------------------------------------------------------------------------------------------------------------------------------------------------------------------------------------------------------------------------------------------------------------------------------------------------------------------------------------------------------------------------------------------------------------------------------------------------------------------------------------------------------------------------------------------------------------------------------------------------------------------------------------------------------------------------------------------------------------------------------------------------------------------------------------------------------------------------------------------------------------------------------|---------------------------------------------------------------------------------------------------------------------------------------------------------------------------------------------------------------------------------------------------------------------------------------------------------------------------------------------------------------------------------------------------------------------------------------------------------------------------------------------------------------------------------------------------------------------------------------------------------------------------------------------------------------------------------------------------------------------------------------------------------------------------------------------------------------------------------------------------------------------------------------------------------------------------------------------------------------------------------------------------------------------------------------------------------------------------------------------------------------------------------------------------------------------------------------------------------------------------------------------------------------------------------------------------------------------------------------------------------------------------------------------------------------------------------------------------------------------------------------------------------------------------------------------------------------------------------------------------------------------------------------------------------------------------------------------------------------------------------------------------------------------------------------------------------------------------------------------------------------------------------------------|
| <ul style="list-style-type: none"> • Outside Plant Engineering, Rogers Cablesystems Inc. • Owner / Manager, Green Edge, Division of Ecocare Limited • Owner, Heritage Hardware Ltd., • Patricia Bidgood & Associates, • PAWER LIMITED, • Petro-Canada (Kitchener), • Phoenix Pet Food, • PINNACLE HOLDINGS CORP • Planner, Zelinka Priamo Ltd., • Planning, housing and Community Services, Region of Waterloo • Plant Manager, Kitchener, Weston Bakeries Limited Ontario, • Police Service, Traffic Services • Polyman Plastics Co, • President, 2122498 Ontario Limited, • President, Grand River Community Métis Council, • Project Supervisor, Allstream, OSP Network Implementation • Property Director, Manulife Financial, • Property Management/Real Estate Division, Petro-Canada, • Provincial Lift, • Public Works, Township of Guelph/Eramosa, • Qus, • R.M. W. Elextric Ltd, • Region of Waterloo Community Housing Inc., re 416 Kingscourt Drive • Region of Waterloo Staff, Grand River Accessibility Advisory Committee, Social Planning, Policy and Program Administration • Region of Waterloo, Heritage Planning Advisory Committee • Regional Director, West Central Office, Ministry of Municipal Affairs and Housing, • Roadtrek, • SAAB of KW, • Salesperson, Cushman & Wakefield Waterloo Region Ltd., Property List ID: 1344005 • Scribblers' Club, • Secret Hair Studio, • Sellner Flooring, • Shamrock Co-operative Homes Inc., • Sherri's Living Large, • Shugg R G Engineering Limited, • Simon McWhinnie Riediger & Meredith LP, • Six Nations of the Grand River, • Sound On Sound Recording Studio, | <ul style="list-style-type: none"> • Sound Service Electronics, • Speer Canada Inc, • Staff Sergeant, Waterloo Regional Police - Traffic Division, • Stephans Auto Repair, • Stock Transportation Ltd, • Stonebridge Imports Limited, • Stotesbury transfer Ltd., • Student Transportation Services of Waterloo Region, • Suncor Energy Inc., • Superior Memorials, • Superior Truck Lines Limited, • Supervisor of Traffic and Parking, City of Kitchener, • Supervisor, Resource Planning, Grand River Conservation Authority, Resource Management Division • THE CORPORATION OF THE CITY OF KITCHENER, • THE GRAND TRUNK RAILWAY COMPANY OF CANADA (CNR), • The Roofman Inc, • The Royal Astronomical Society of Canada – Kitchener Waterloo Centre, Light Abatement Committee • The Styling Cellar, • THEN AGAIN FURNITURE, • Transporation Demand Management Planner, Cycling Advisory Committee • Transportation & Environmental Services, Region of Waterloo, • Transportation & Environmental Services, Region of Waterloo, • Transportation Engineer, Stantec, • Transportation Planning Engineer, Region of Waterloo, • Trevor Schwark, • Tri City Retail Systems, • Trishan, • TruHealth & Wellness, • Twin City Graphics, • Twisted Inc, • University of Waterloo, • Uptown Decor Painting & Decorating, • Utilities Coordinator, CN, • Varcen Property Management Inc, • Vice-President of Operations and Sales, 2122498 Ontario Limited, • Victoria Nail Salon, • Villa Marie 2, • Villa Marie 4, |
|--------------------------------------------------------------------------------------------------------------------------------------------------------------------------------------------------------------------------------------------------------------------------------------------------------------------------------------------------------------------------------------------------------------------------------------------------------------------------------------------------------------------------------------------------------------------------------------------------------------------------------------------------------------------------------------------------------------------------------------------------------------------------------------------------------------------------------------------------------------------------------------------------------------------------------------------------------------------------------------------------------------------------------------------------------------------------------------------------------------------------------------------------------------------------------------------------------------------------------------------------------------------------------------------------------------------------------------------------------------------------------------------------------------------------------------------------------------------------------------------------------------------------------------------------------------------------------------------------------------------------------------------------------------------------------------------------------------------------------------------------------------------------------------------------------------------------------------------------------------------------------------------------------------------------------------------------------------------------------------------------------------|---------------------------------------------------------------------------------------------------------------------------------------------------------------------------------------------------------------------------------------------------------------------------------------------------------------------------------------------------------------------------------------------------------------------------------------------------------------------------------------------------------------------------------------------------------------------------------------------------------------------------------------------------------------------------------------------------------------------------------------------------------------------------------------------------------------------------------------------------------------------------------------------------------------------------------------------------------------------------------------------------------------------------------------------------------------------------------------------------------------------------------------------------------------------------------------------------------------------------------------------------------------------------------------------------------------------------------------------------------------------------------------------------------------------------------------------------------------------------------------------------------------------------------------------------------------------------------------------------------------------------------------------------------------------------------------------------------------------------------------------------------------------------------------------------------------------------------------------------------------------------------------------|

Project Contact List: Public Consultation

- Vista Clean Security,
- Waterloo Catholic District School Board,
- Waterloo North Hydro Inc.,
- Waterloo Region District School Board,
- Waterloo Regional Police Service
- Waterloo Siding,
- Western Union, MAMA's CASH
- Weston Bakeries Limited Ontario,
- William Radtke Sheet Metal Limited,
- Williams Property & McDaniel Management,
- Wired Time Com Inc,
- Wolverine Heating & Cooling Inc,
- Woodbridge Foam Corporation,
- Woodburner Liesure Living Centre,
- Woodside Industrial Centre,
- Ws Enterprises,
- Xterra Construction Inc,
- ZDENO CYCLE CENTRE LTD,
- Zelinka Priamo Ltd.,

NOTICE OF COMMENCEMENT

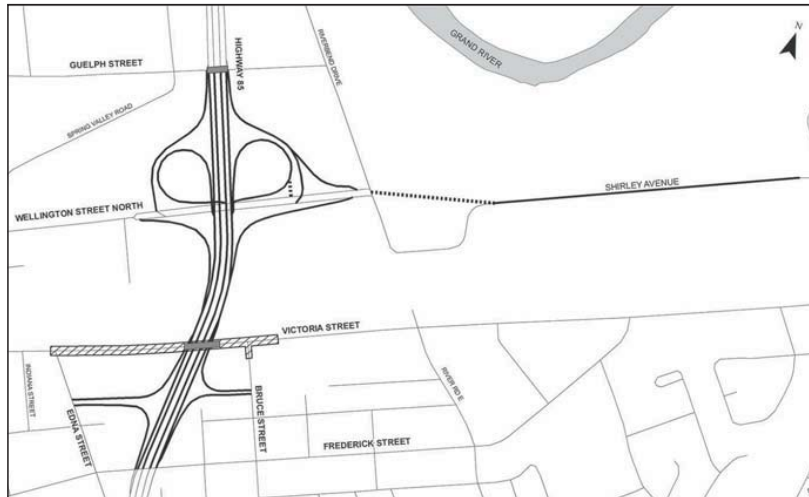
Detailed Design Study to Advance Construction for Highway 7 New Victoria Street Widening and Bridge Replacement and Shirley Avenue Extension

THE STUDY

The Ontario **Ministry of Transportation (MTO)** has retained **MMM Group Limited (MMM)** to complete the detailed design for the Victoria Street widening and bridge replacement and Shirley Avenue extension (key plan), as part of the Ministry's commitment to advance construction work for the approved Highway 7 New – Kitchener to Guelph project. The work will generally include the following:

- Replacement of the Victoria Street Bridge and grade raise over Highway 85
- Widening of Victoria Street to accommodate a two-way centre left turn lane between Edna Street and the future Bruce Street extension to Wellington Street
- Intersection improvements at Victoria Street/Bruce Street
- Installation of a new median barrier on Victoria Street between Edna Street and Bruce Street
- Modifications to the Bruce Street on-ramp
- Modifications to the Wellington Street interchange to accommodate the closure of the south-east ramp
- Extension of Shirley Avenue to Wellington Street North
- **Widening of the Guelph Street Bridge**
- Utility relocations
- Entrance modifications
- Illumination

Victoria Street will be closed from Edna Street to Bruce Street during the construction of the Victoria Street Bridge replacement. Local road detours will be in place for at least one year with access for local traffic from the Edna Street intersection only.



THE PROCESS

Under the *Class Environmental Assessment (Class EA) for Provincial Transportation Facilities* (2000), this project is identified as a Group 'B' project. A Design and Construction Report (DCR) will be prepared to document the detailed design. The report will be made available for a 30-day public review period with public notice advising the start of the review period. The DCR is not eligible for a Part II Order ('bump-up').

This project incorporates the Regional Municipality of Waterloo's planned improvements to Victoria Street as documented in their April 2013 Class EA Schedule 'B' planning process to develop an operational and safety improvement strategy for the Victoria Street Corridor between Edna and Bruce Street.

The remainder of Highway 7 New will be constructed in subsequent phases.

COMMENTS

We are interested in hearing your comments regarding this study. Comments and information are being collected to assist the study team in meeting the requirements of the *Environmental Assessment Act*. This information will be maintained on file for use during the project and may be included in project documentation. With the exception of personal information, all comments will become part of the public record in accordance with the *Freedom of Information and Protection of Privacy Act, R.S.O., 1990, c.F.31*.

Please contact either:

Ms. Alla Dinerman, P.Eng.
Manager – Highways
Transportation
MMM Group Limited
100 Commerce Valley Drive West
Thornhill, ON L3T 0A1
tel: 905-882-7212
fax: 905-882-0055
e-mail: dinermana@mmm.ca

Mr. Robert Bakalarczyk, P.Eng.
Senior Project Engineer
Ministry of Transportation, West Region
Planning and Design Section
659 Exeter Road, 3rd Floor
London, ON N6E 1L3
tel: 519-873-4602
fax: 519-873-4600
e-mail: robert.bakalarczyk@ontario.ca

If you have any accessibility requirements in order to participate in this project, please contact one of the Project Team members. Pour des renseignements en français veuillez communiquer avec M. Marc St. Louis au tél : 905 882-4211, poste 6378, courriel : st.louism@mmm.ca.

Ministry of Transportation

**Engineering Office
Environmental Section
West Region**

659 Exeter Road
London, Ontario N6E 1L3
Telephone: (519) 873-4560
Facsimile: (519) 873-4600
Email: Cathy.Giesbrecht@ontario.ca

Ministère des Transports

**Bureau du génie
Section de l'environnement
Région de l'Ouest**

659, chemin Exeter
London, (Ontario) N6E 1L3
Téléphone: (519) 873-4560
Télécopieur: (519) 873-4600



August 25, 2014

Copy of First Nation Letter

**RE: Notice of Study Commencement
Detailed Design Study to Advance Construction for Highway 7 New
Victoria Street Widening and Bridge Replacement; and Shirley Avenue Extension, Kitchener
MTO W.P. 3023-14-01**

The Ministry of Transportation, Ontario (MTO) has retained MMM Group Limited (MMM) to undertake the detailed design for the Victoria Street widening and bridge replacement, and Shirley Avenue extension, as part of the Ministry's commitment to advance construction work for the approved Highway 7 New – Kitchener to Guelph project. The enclosed *Ontario Government Notice* provides a key plan and additional details for your reference.

MTO is inviting Alderville First Nation to participate in this project and to assist us in identifying the environmental, social and cultural values your community may have within the study area.

A Design and Construction Report (DCR) will be prepared to document the detail design. The report will be made available for a 30-day public review period with public notice advising the start of the review period.

Should you have any questions, please contact me at (519) 873-4560, or by email at cathy.giesbrecht@ontario.ca. If you would prefer a meeting with ministry staff, that can also be arranged. Please contact me at your earliest convenience if you are interested in such a meeting.

Yours truly,

Cathy Giesbrecht
Head, Environmental Section

Attachment: Ontario Government Notice of Commencement

- c. R. Bakalarczyk, Senior Project Engineer, MTO
- S. Wagter, Senior Environmental Planner, MTO
- L. Currie, Aboriginal Liaison Officer, MTO
- A. Dinerman, Project Manager, MMM
- J. Warren, Environmental Planner, MMM

MMM Group Limited
100 Commerce Valley Drive West
Thornhill, ON Canada L3T 0A1
t: 905.882.1100 | f: 905.882.0055

www.mmm.ca

August 26, 2014

16.08027.003.EN4

[REDACTED]

Copy of Agency/Stakeholder Letter

Subject: Notice of Study Commencement – Detailed Design Study to Advance Construction for Highway 7 New; Victoria Street Widening and Bridge Replacement, and Shirley Avenue Extension

The Ministry of Transportation, Ontario (MTO) has retained MMM Group Limited (MMM) to complete the detailed design for the Victoria Street widening and bridge replacement, and Shirley Avenue extension (key plan), as part of the ministry's commitment to advance construction work for the approved Highway 7 New – Kitchener to Guelph project. Under the *Class Environmental Assessment (Class EA) for Provincial Transportation Facilities* (2000) this project is identified as a Group 'B' project. A Design and Construction Report (DCR) will be prepared to document the detail design. The report will be made available for a 30-day public review period with public notice advising the start of the review period. The project will include:

- Replacement of the Victoria Street Bridge and grade raise over Highway 85
- Widening of Victoria Street to accommodate a two-way centre left turn lane between Edna Street and the future Bruce Street extension to Wellington Street
- Intersection improvements at Victoria Street/Bruce Street
- Installation of a new median barrier on Victoria Street between Edna Street and Bruce Street
- Modifications to the Bruce Street on-ramp.
- Modifications to the Wellington Street interchange to accommodate the closure of the south-east ramp
- Extension of Shirley Avenue to Wellington Street North
- Widening of the Guelph Street Bridge
- Utility relocations
- Entrance modifications
- Illumination

Victoria Street will be closed from Edna Street to Bruce Street during the construction of the Victoria Street Bridge replacement. Local road detours will be in place for at least one year with access for local traffic from the Edna Street intersection only.

A copy of the newspaper notice is included for your reference. We are interested in hearing your comments regarding this study. Comments and information regarding this project are being collected to assist the study team in meeting the requirements of the Environmental Assessment Act. Please contact the undersigned at (905) 882-7212 or by email at dinermana@mmm.ca, if you require assistance, or additional information.

Yours truly,

MMM Group Limited



Alla Dinerman, P.Eng.
Manager - Highways
Transportation

cc: Robert Bakalarczyk (MTO), Susan Wagter (MTO), Minh Mach (MMM), Jeff Warren (MMM)
encl. Notice of Study Commencement

With the exception of personal information, all comments will become part of the public record in accordance with the *Freedom of Information and Protection of Privacy Act R.S.O., 1990, c.F.31*.

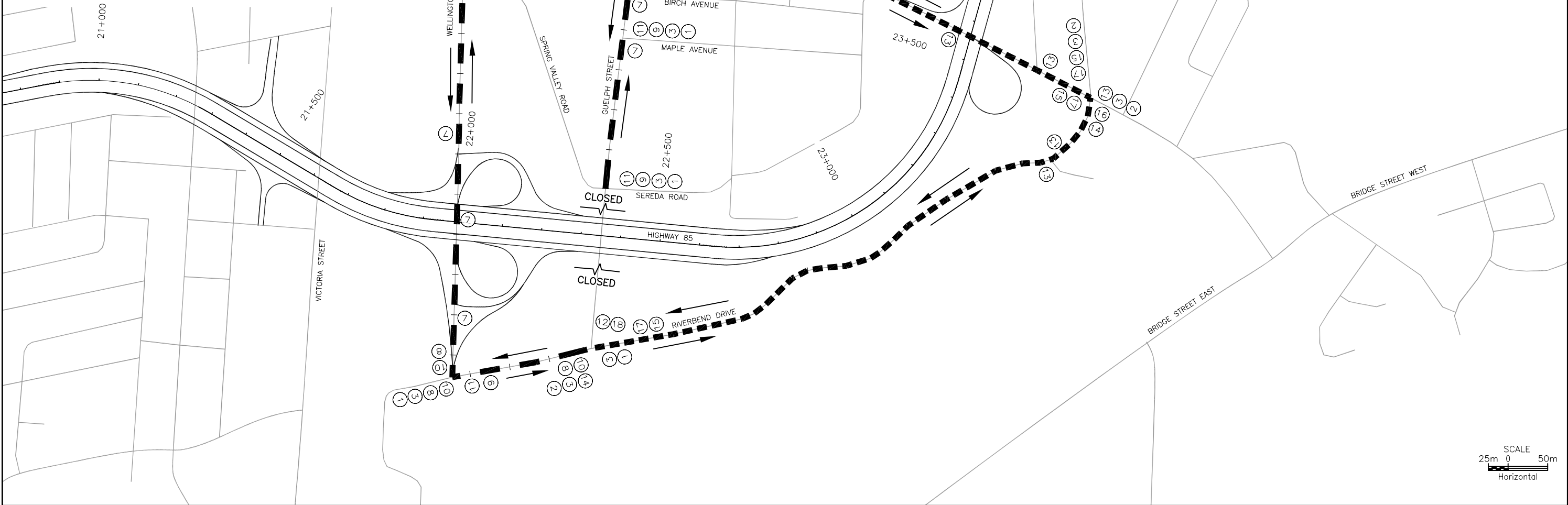
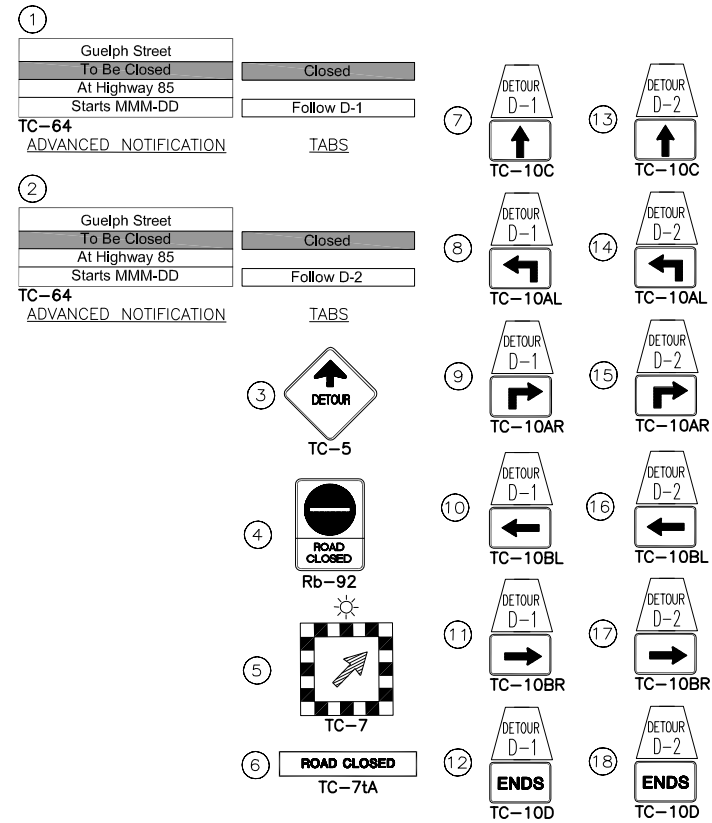
APPENDIX B

CONSTRUCTION PLANS

DRAWING PATH: K:\Drawings\8000-8199\8114 Hwy 7-8 & 85 Rehabilitation\Contract Sheets\Contract 2\
DRAWING NAME: 3810019_507_Detour.dwg
DRAWING LAYOUT NAME: 507_Guelph Detour
LAST UPDATED: Nov 27, 2014-16:17
PRINTED: Dec 4, 2014-06:57

MINISTRY OF TRANSPORTATION, ONTARIO
PR-D-707 88-05

TC-64 SIGNS (TYPICAL)
Black on white FHWA SeriesD2001CA
Black on orange FHWA SeriesD2001CA
Black on white FHWA SeriesD2001CA
Black on white FHWA SeriesD2001CA
Board Size: 1219mm x 2438mm
Tab Size: 305mm x 2438mm
Lettering: 200mm FHWA Em and C



METRIC



PLATE No
CONT 2014-3019
WP 3110-09-00
GUELPH STREET CLOSURE
DETOUR
Survey Revised
MMM GROUP

SHEET
17

SCALE
25m 0 50m
Horizontal

WATERMAIN LAYOUT	
STATION	OFFSET
9+898	2.35 LT
9+900	2.35 LT
9+905	2.29 RT
9+945	2.29 RT
9+946	3.25 RT
10+083	3.25 RT
10+089	2.74 LT
10+093	2.74 LT

NOTES:

1. SEE DETAILS FOR SUBGRADE TRANSITION REQUIREMENTS.
2. EXPOSE, CUT AND CAP EXISTING WATERMAIN TO PERMIT BRIDGE CONSTRUCTION AND MAINTAIN EXISTING SERVICE.
3. EXISTING WATERMAIN IS CAST IRON AND APPROXIMATELY 30 YEARS OLD.

METRIC

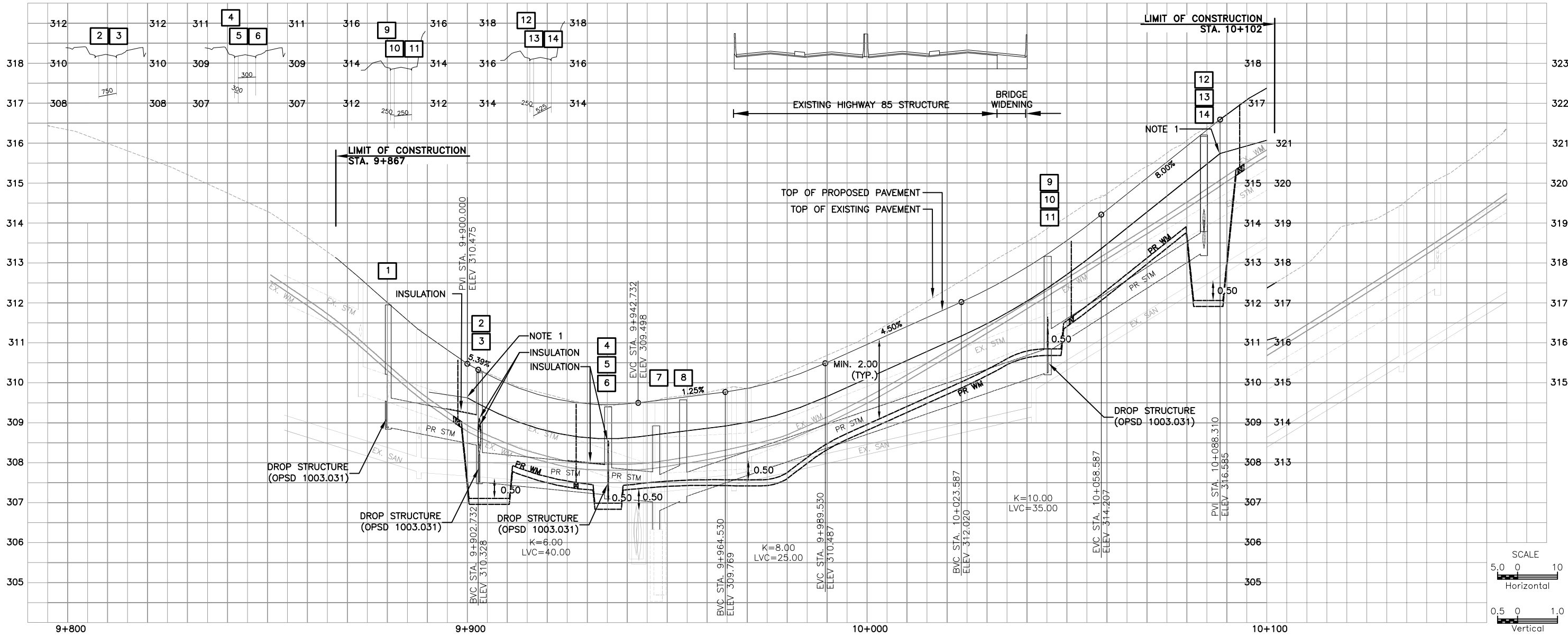
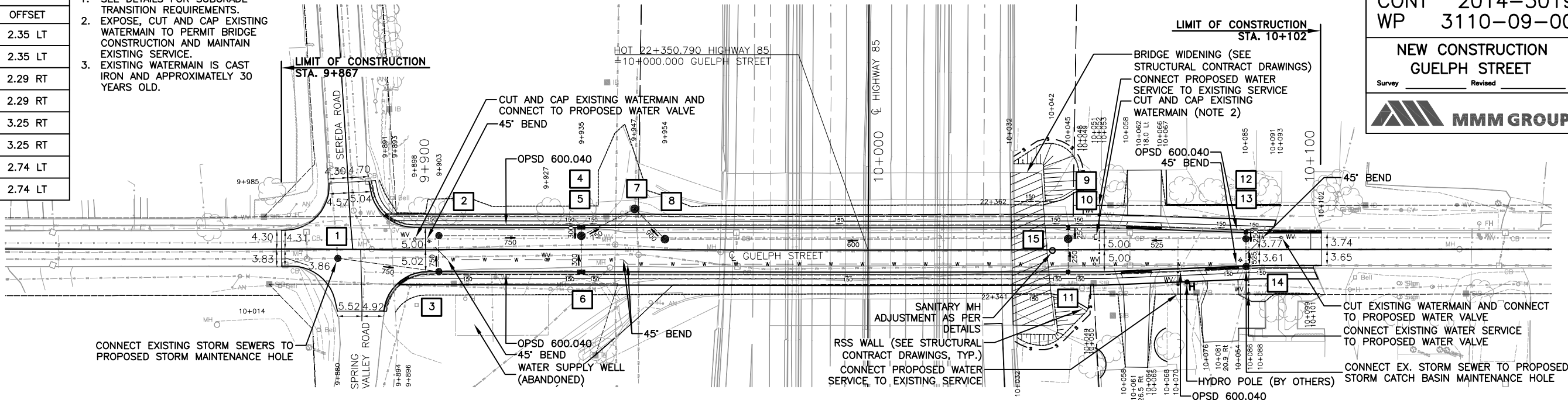
PLATE No
CONT 2014-3019
WP 3110-09-00

NEW CONSTRUCTION
GUELPH STREET

Survey _____ Revised _____
MMM GROUP



SHEET
42



DRAWING PATH: K:\Drawings\8000-8199\8114 Hwy 7-8 & 85 Rehabilitation\Contract Sheets\Contract 2\
DRAWING NAME: 3810019_NC02.dwg
LAST UPDATED: Dec 4, 2014-09:58
PRINTED: Dec 4, 2014-09:59

